



Company : Overseas Energy Holdings Ltd

Well : Westwood 1 ST1

Interval : 844.00 - 1695.62 meters

Created : 01/Jan/2010 8:52:28 AM

**OEH**  
OVERSEAS ENERGY HOLDINGS LTD

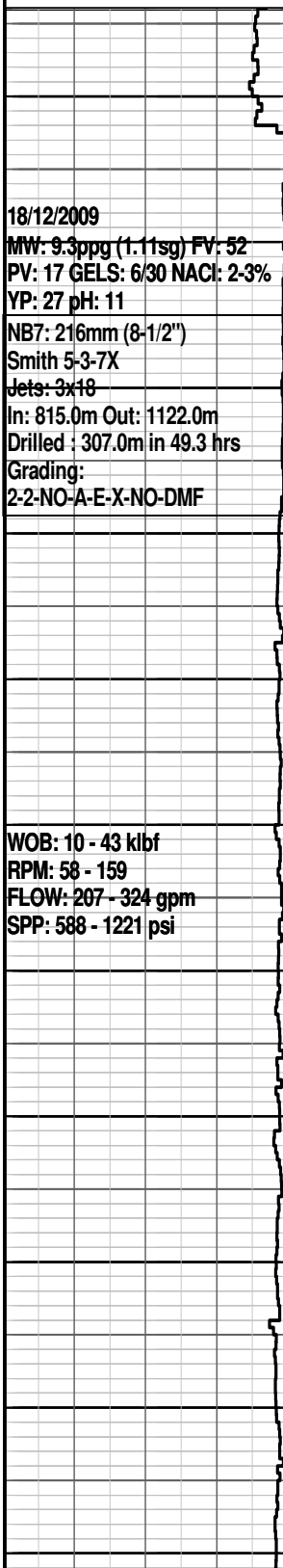
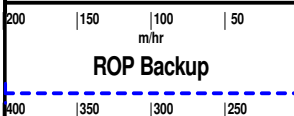
**INTEQ**

## DRILLING DATA PLOT

ROP

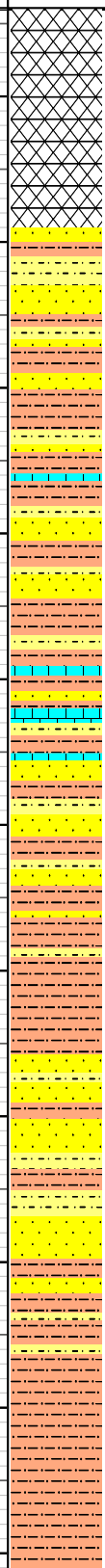
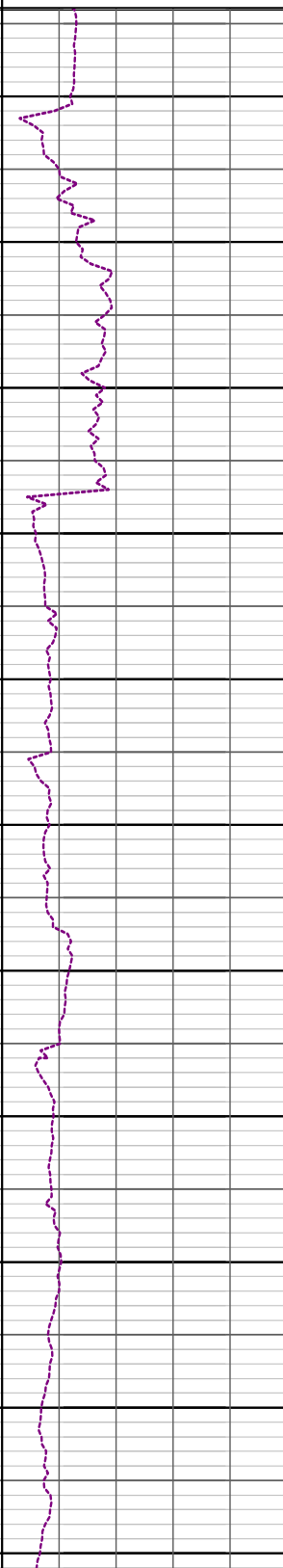
WOB Avg

INTERPRETED  
LITHOLOGY



18/12/2009  
MW: 9.3ppg (1.11sg) FV: 52  
PV: 17 GELS: 6/30 NACL: 2-3%  
YP: 27 pH: 11  
NB7: 216mm (8-1/2")  
Smith 5-3-7X  
Jets: 3x18  
In: 815.0m Out: 1122.0m  
Drilled : 307.0m in 49.3 hrs  
Grading:  
2-2-NO-A-E-X-NO-DMF

WOB: 10 - 43 klbf  
RPM: 58 - 159  
FLOW: 207 - 324 gpm  
SPP: 588 - 1221 psi

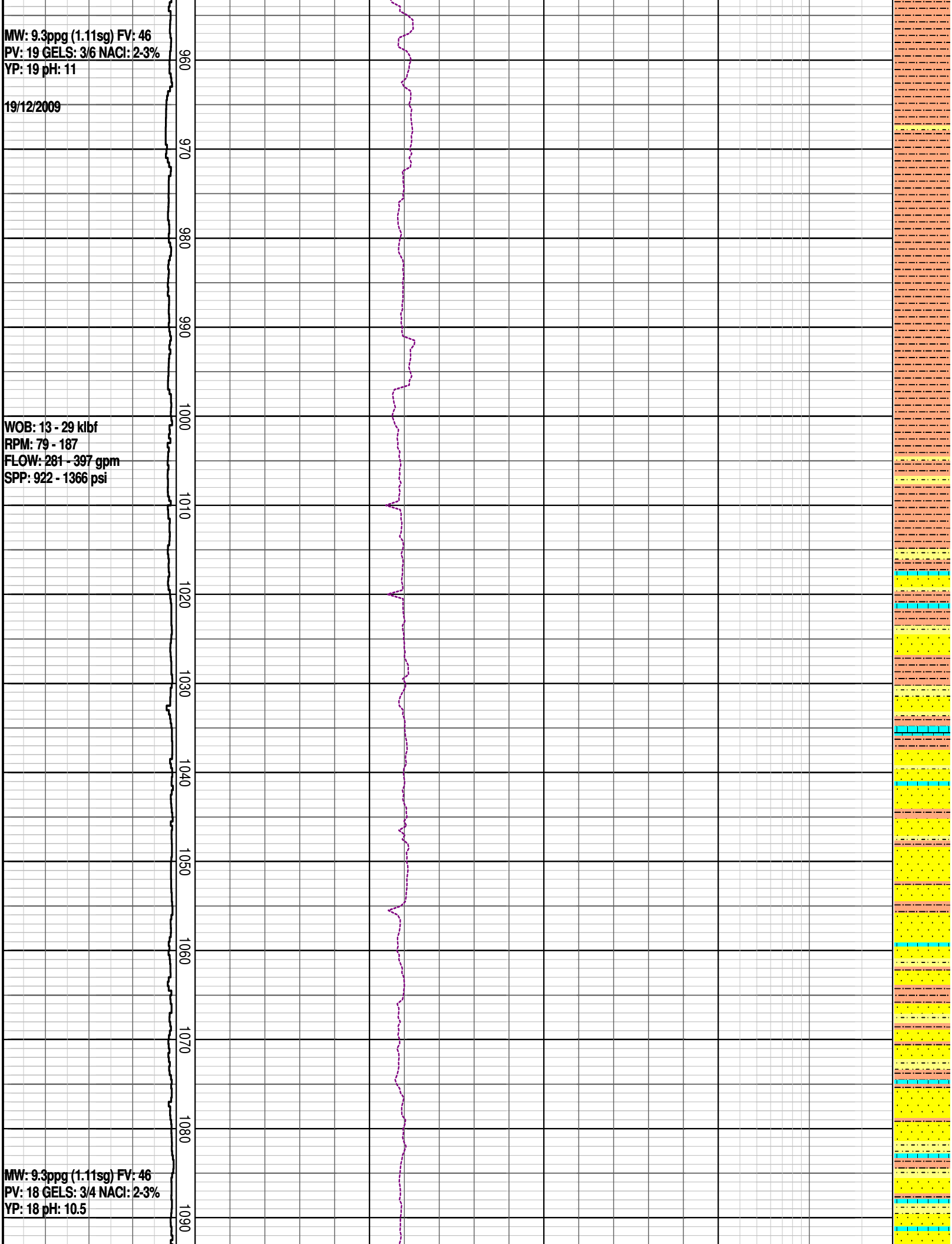


MW: 9.3ppg (1.11sg) FV: 46  
PV: 19 GELS: 3/6 NACl: 2-3%  
YP: 19 pH: 11

19/12/2009

WOB: 13 - 29 kbf  
RPM: 79 - 187  
FLOW: 281 - 397 gpm  
SPP: 922 - 1366 psi

MW: 9.3ppg (1.11sg) FV: 46  
PV: 18 GELS: 3/4 NACl: 2-3%  
YP: 18 pH: 10.5



20/12/2009

WOB: 11 - 25 klbf  
RPM: 80 - 173  
FLOW: 248 - 395 gpm  
SPP: 1024 - 1364 psi

MW: 9.3ppg (1.11sg) FV: 44  
PV: 19 GELS: 3/4 NACL: 2-3%  
YP: 16 pH: 10.5  
10m DEPTH CORRECTED  
AFTER  
BIT TRIP

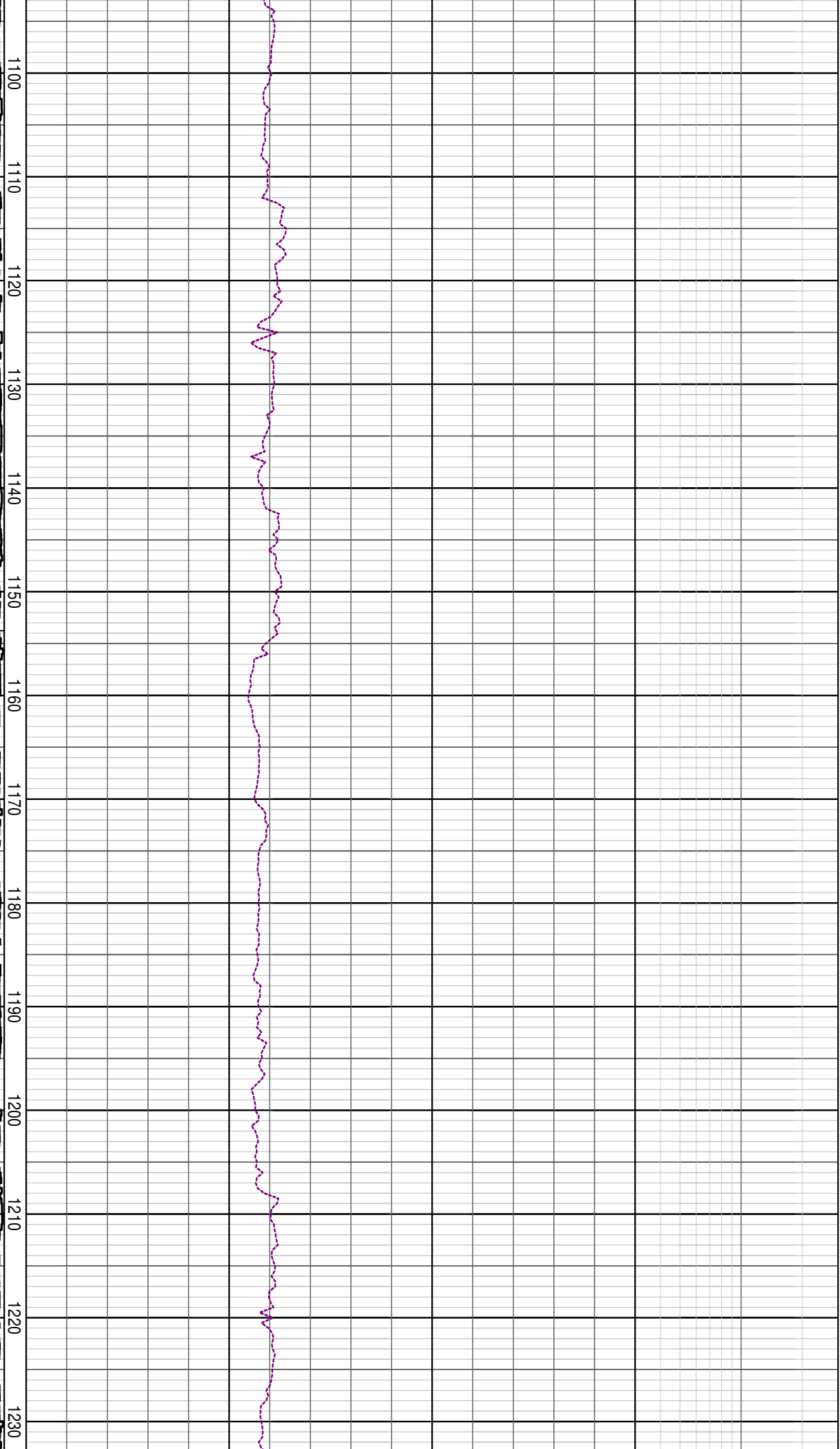
SAMPLES FROM  
1123.0mMDRT ARE  
10.0m DEPTH CORRECTED  
START RECORDING DATA  
E/1117m  
NB8: 216mm (8-1/2")  
Smith PJ4480  
Jets: 3x18  
In: 1112.0m Out: 1389.0m  
Drilled : 277.0m in 60.9 hrs  
Grading:  
3-2-NO-A-E-X-NO-DMF

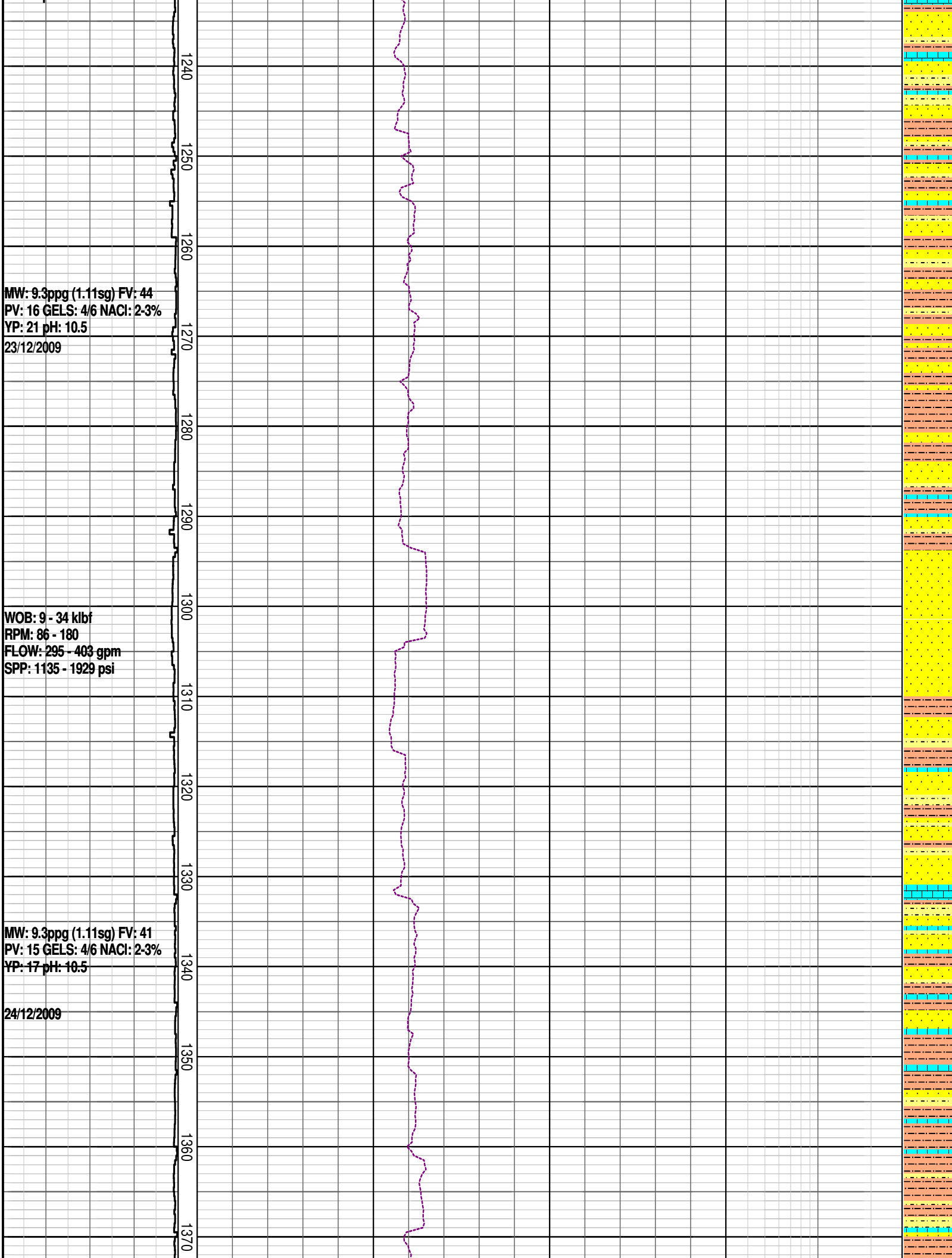
MW: 9.3ppg (1.11sg) FV: 43  
PV: 16 GELS: 2/3 NACL: 2-3%  
YP: 14 pH: 10.5

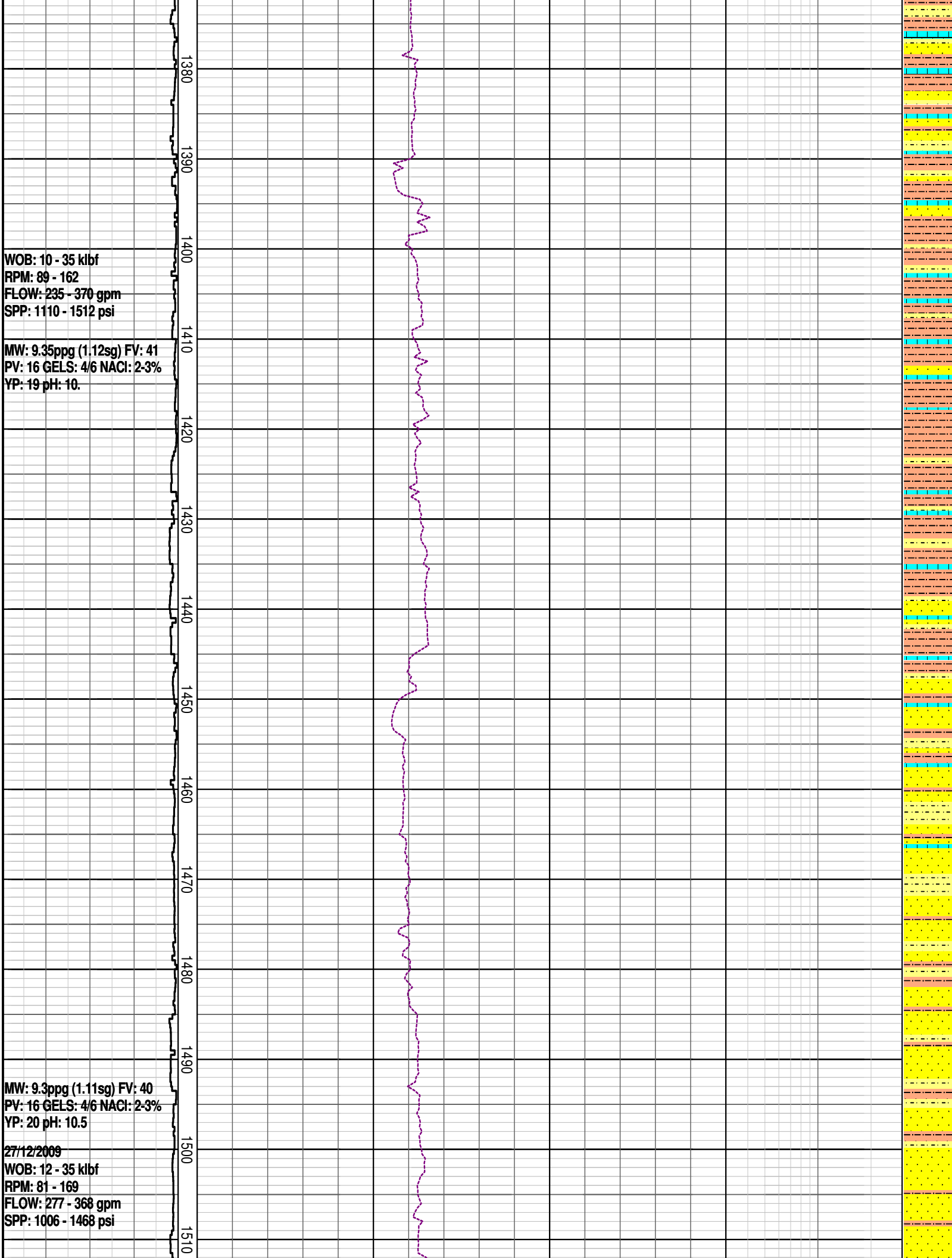
22/12/2009

WOB: 10 - 31 klbf  
RPM: 86 - 172  
FLOW: 292 - 394 gpm  
SPP: 1138 - 1394 psi

MW: 9.3ppg (1.11sg) FV: 40  
PV: 17 GELS: 3/4 NACL: 2-3%  
YP: 16 pH: 10.5





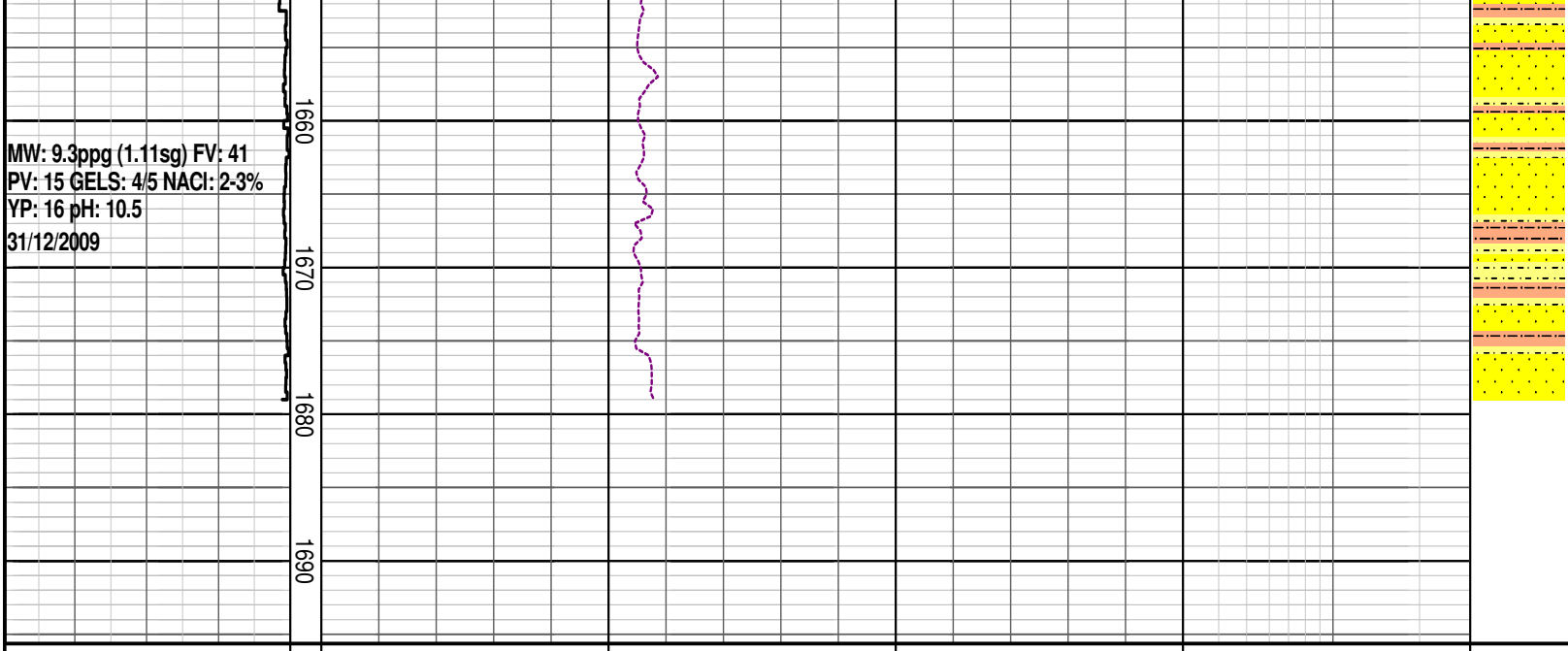


MW: 9.3ppg (1.11sg) FV: 41  
PV: 15 GELS: 4/6 NACL: 2-3%  
YP: 21 pH: 10.2

MW: 9.3ppg (1.11sg) FV: 42  
PV: 17 GELS: 4/6 NACL: 2-3%  
YP: 22 pH: 10.1  
29/12/2009

WOB: 13 - 40 kbf  
RPM: 70 - 148  
FLOW: 265 - 384 gpm  
SPP: 1207 - 1529 psi





### DRILLING DATA PLOT

